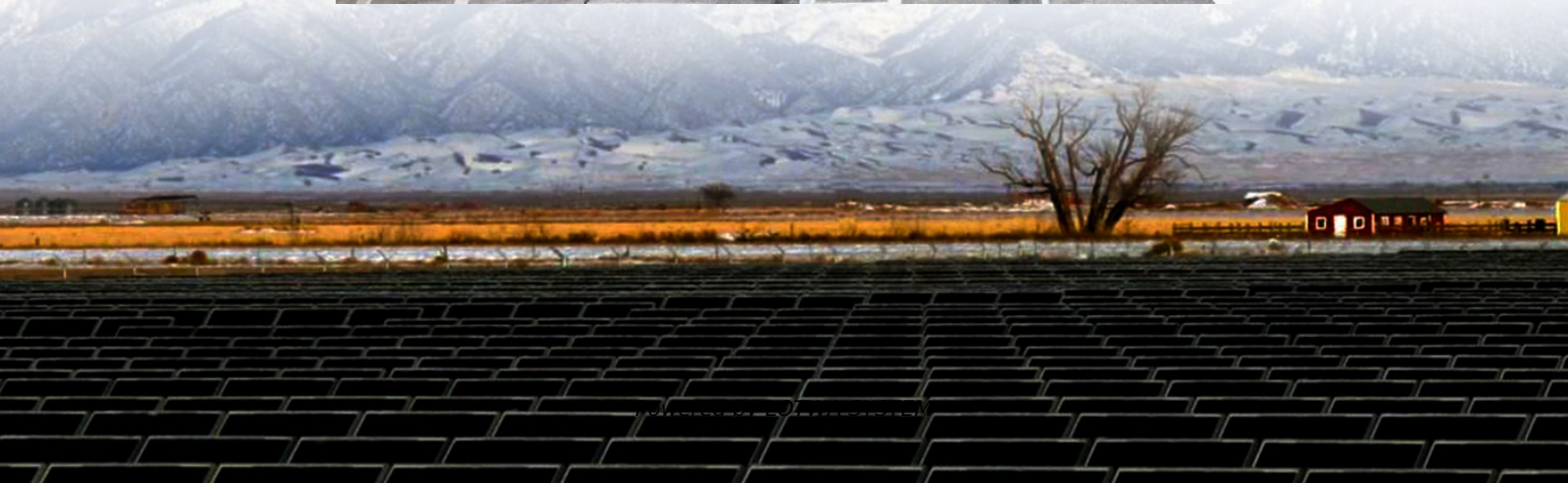
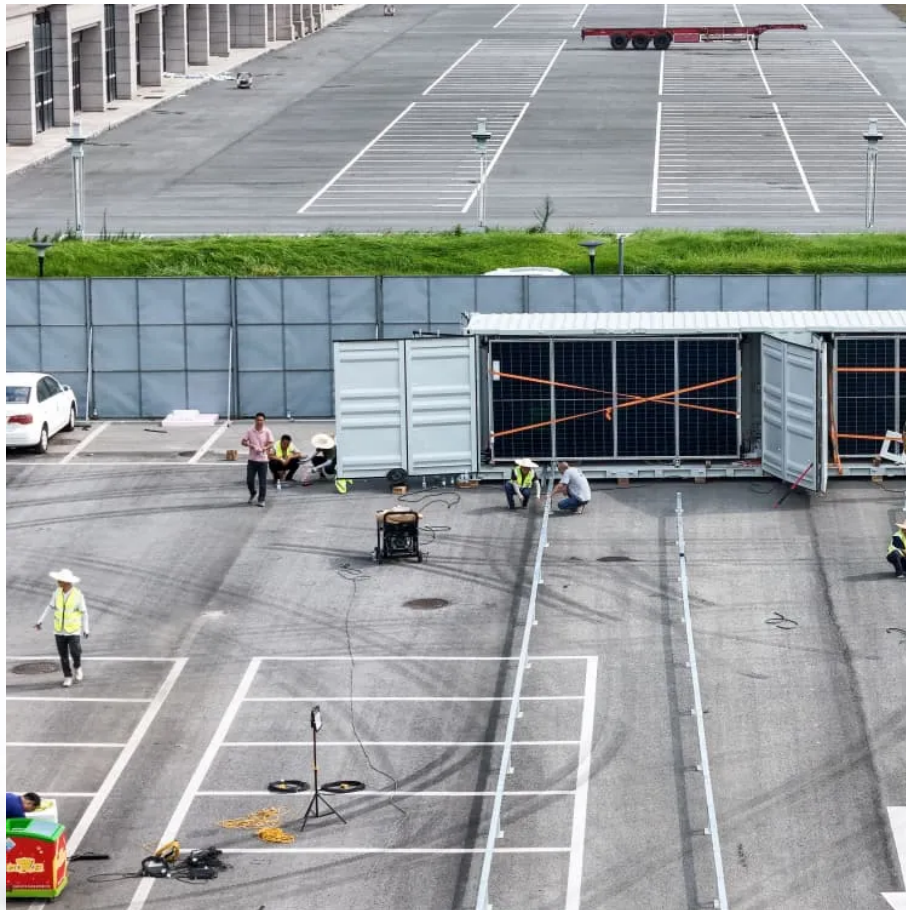


# The earliest grid energy storage power station northwest of Reykjavik





## Overview

---

When did the Reykjavik Electricity Authority start?

The operation of the Reykjavik Electricity Authority began formally in 1921, when a hydroelectric power station was inaugurated on the Ellida river. The distribution system was enlarged to keep pace with the rapid increase in the population of the capital during the 1920's and soon the Ellida station cope with the demand.

How many power stations are there in Iceland?

We operate fourteen hydropower stations, three geothermal power stations and two wind turbines for research purposes in five operating areas in Iceland. In operating power stations, emphasis is placed on a holistic vision, where prudence, reliability and harmony of the operations with environment and society are the guiding principles.

When was the first hydropower plant built in Iceland?

The first hydropower plant in Iceland started operation in 1904 in Hafnafjörður. Reykjavík saw its first hydropower plant set up in 1921 and Akureyri in 1922. With these plants, the electricity market in Iceland was created.

What makes Landsvirkjun a good power station?

In operating power stations, emphasis is placed on a holistic vision, where prudence, reliability and harmony of the operations with environment and society are the guiding principles. Landsvirkjun is the National Power Company of Iceland. We produce electricity from renewable energy sources; hydropower, geothermal energy, and wind.



## The earliest grid energy storage power station northwest of Reykja

---

Nesjavellir power station in Iceland, a central geothermal power ...

Download scientific diagram , Nesjavellir power station in Iceland, a central geothermal power plant [51, 52] from publication: Central versus wellhead power plants in geothermal grid ...

---

### ENERGY IN ICELAND

The earliest grid energy storage power station in northwest Iceland Gas In 1905 a power plant was set up in Hafnarfjörður, a town which is a suburb of Reykjavík. Reykjavík wanted to copy ...

---

### Power stations

We operate fourteen hydropower stations, three geothermal power stations and two wind turbines for research purposes in five operating areas in Iceland. In operating power stations, emphasis ...

---

### Reykjavik Energy

Nov 9, 2025 · The operation of the Reykjavik Electricity Authority began formally in 1921, when a hydroelectric power station was inaugurated on ...

---

### Reykjavik outdoor energy storage power supply

The plan includes several measures to achieve the target,with promises to mandate the green emphasis in all of the city's operations. For example,one goal is to ensure all vehicles in the ...

---

### Hydropower

The first hydropower plant in Iceland started operation in 1904 in Hafnafjörður. Reykjavík saw its first hydropower plant set up in 1921 and Akureyri in 1922. With these plants, the electricity ...

---

### Reykjavík, Iceland: A City Powered by Geothermal Energy

Sep 30, 2024 · Hellisheiði vs. Nesjavellir: Reykjavik's Geothermal Powerhouses Reykjavík boasts two powerhouse geothermal energy plants, each playing a critical role in powering the city with ...

---

### Iceland Qingxi Pumped Storage Power Station: The Giant ...

Jun 6, 2025 · Ever wondered how Iceland powers its geothermal spas and northern lights data centers during windless winter nights? Meet the Qingxi Pumped Storage Power Station - the ...

---

### Nesjavellir power station in Iceland, a central ...

Download scientific diagram , Nesjavellir power station in Iceland, a central geothermal power plant [51, 52] from publication: Central versus wellhead ...

---

### The Reykjavik Energy Storage Project: Powering the Future ...



Why Reykjavik's Energy Storage Project Is Making Headlines Nestled in the world's northernmost capital, the Reykjavik Energy Storage Project is rewriting the rules of sustainable energy. With ...

---

#### Reykjavik Energy

Nov 9, 2025 · The operation of the Reykjavik Electricity Authority began formally in 1921, when a hydroelectric power station was inaugurated on the Ellida river. The distribution system was ...

---

#### Reykjavík, Iceland: A City Powered by ...

Sep 30, 2024 · Hellisheiði vs. Nesjavellir: Reykjavik's Geothermal Powerhouses Reykjavík boasts two powerhouse geothermal energy ...

---

#### The earliest grid energy storage power station northwest of Reykjavik

Advanced Lithium-Ion Battery Storage Systems Our lithium-ion storage systems store excess energy generated during the day for use at night or during peak demand periods. Offering fast ...

---

## Contact Us

---

For technical specifications, project proposals, or partnership inquiries, please visit:

<https://www.lopianowa.pl>

## Scan QR Code for More Information





<https://www.lopianowa.pl>