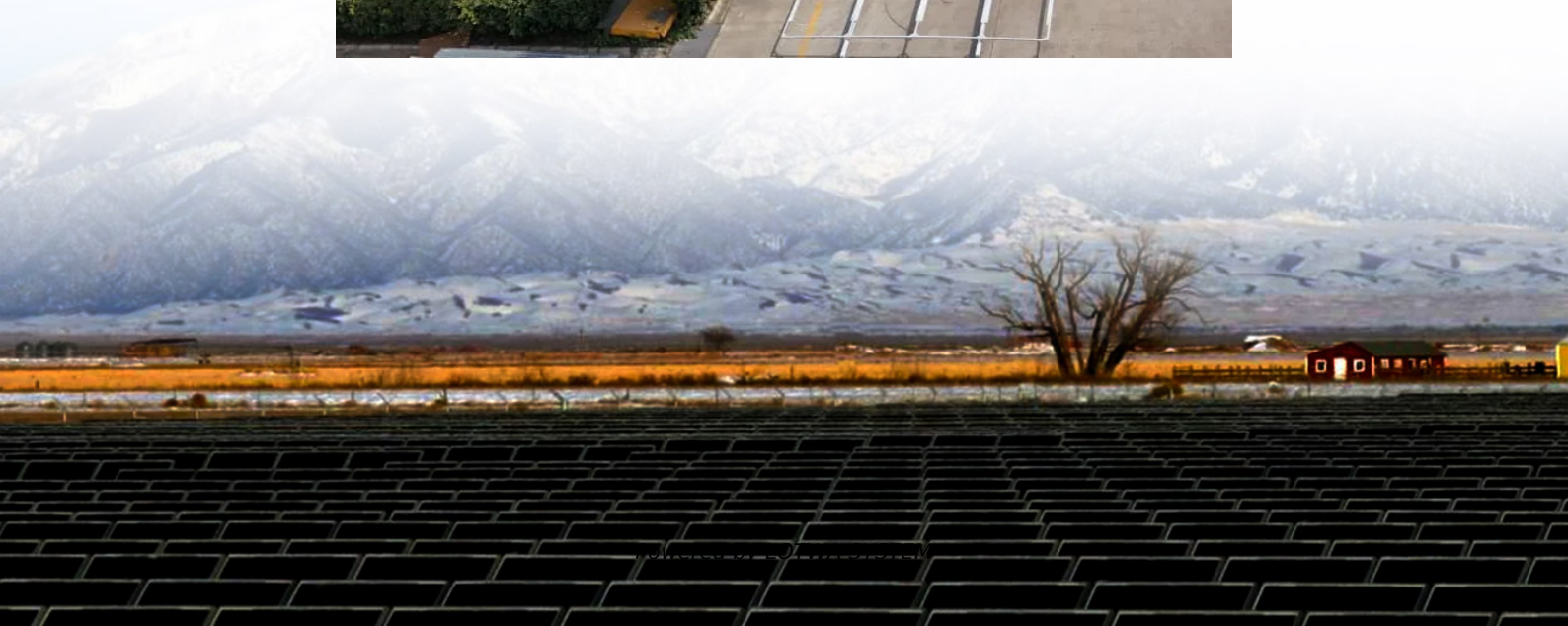


Measure the voltage of the battery cabinet





Overview

How do you test a battery?

Always check voltage before load testing a battery. Use MIN/MAX to catch voltage drops when starting the engine. Combine this test with ripple voltage and voltage drop tests for a complete system diagnosis. On maintenance-accessible batteries, also check electrolyte level and specific gravity if voltage is low.

How do you test a battery with a multimeter?

Connect multimeter probes to battery & measure the voltage. The voltage should fall across the specified in the cell or battery's datasheet. For NMC (Nickel-Manganese-Cobalt), this will range between 2.5 V & 4.2 V per cell. An LFP (Lithium Iron Phosphate) cell (or) battery will have a voltage between 2.5 V and 3.7 V.

How do I check battery cell voltage?

This website is a participant in the Amazon Services LLC Associates Program, an affiliate advertising program designed to provide a means for us to earn fees by linking to Amazon.com and affiliated sites. To check battery cell voltage, you use a digital multimeter to measure the voltage across each individual cell terminal.

How do you charge a battery with a buck converter?

To charge the battery, the buck converter is enabled while the first-stage voltage Op Amps and current-sense INA are used to measure battery voltage and charging current of the battery cell or battery pack.



Measure the voltage of the battery cabinet

Battery Pack Voltage Measurement: What ...

The terminal-to-ground voltage and module-to-module voltage of an instrument are important to safely measure battery cell voltage and ...

Battery Pack Voltage Measurement: What You Need to Know

The terminal-to-ground voltage and module-to-module voltage of an instrument are important to safely measure battery cell voltage and temperature during charge/discharge testing of high ...

How to measure the voltage of batteries in the battery ...

If we assume one terminal of the battery pack is connected to ground, we can measure the open circuit voltage across each cell. This works because DMMs measure differential voltage, or the ...

How to measure the voltage of a lithium ...

Jun 20, 2025 · For example, a very low voltage may suggest a fully discharged or damaged battery, while a very high voltage may indicate ...

How to Check Battery Cell Voltage

Jun 17, 2025 · To check battery cell voltage, you use a digital multimeter to measure the voltage across each individual cell terminal. This simple ...

Measure the voltage of the battery cabinet

How do you measure a battery with a multimeter? It is measured in ampere-hours (Ah) or milliampere-hours (mAh). When examining the battery with a multimeter, one of the key ...

Methods to Measure Open Circuit Voltage on a Battery Pack

Nov 29, 2025 · There are many reasons for measuring the open circuit voltage on a battery pack and several different ways to measure it. With any high energy system, the most important ...

Methods to Measure Open Circuit Voltage on a Battery Pack

Introduction Battery Open Circuit Voltage Measuring Open Circuit Voltage of The Entire Pack Measuring Open Circuit Voltage on Cells Connected in Parallel Measuring Open Circuit Voltage on Cells Connected in Series Measuring Cells in Series and Parallel Combinations Multichannel Solutions The Keithley Solution Conclusion Most battery packs contain some combination of cells in series and in parallel. For example, modules may be broken down into a few groups of parallel cells that are connected in series and then that module is connected in series to other modules. In these cases, it is important to keep in mind both the need for fuse protection against high current. See more on tek.
[.wr_hlic](#), [.wr_hli](#)
[top:4px;color:#767676;display:block](#).wr_hlic>.wr_hli,.wr_hli>*,.wr_hli
[li{display:inline}.wr_hli+.wr_hli::before{content:" , "}.wr_strike{text-decoration:line-through}](#)Fluke Corporation How to Measure Battery Voltage with a Multimeter , Fluke 6 days ago · Follow this step-by-step guide to measure battery voltage with a multimeter. Measuring battery voltage is a fast,



essential way to determine the state of charge.

How to Measure Battery Voltage with a Multimeter , Fluke

6 days ago · Follow this step-by-step guide to measure battery voltage with a multimeter. Measuring battery voltage is a fast, essential way to determine the state of charge.

Battery Testing Procedure

Jan 10, 2025 · Discover the step-by-step battery testing procedure, including how to measure voltage, capacity, and internal resistance. Using this ...

Simplify Voltage and Current Measurement in Battery ...

Dec 23, 2023 · To charge the battery, the buck converter is enabled while the first-stage voltage Op Amps and current-sense INA are used to measure battery voltage and charging current of ...

How to Check Battery Cell Voltage

Jun 17, 2025 · To check battery cell voltage, you use a digital multimeter to measure the voltage across each individual cell terminal. This simple process reveals the health and charge status ...

How to measure the voltage of a lithium battery pack?

Jun 20, 2025 · For example, a very low voltage may suggest a fully discharged or damaged battery, while a very high voltage may indicate over - charging. Conclusion Measuring the ...

Battery Modules that Have Been Installed in the Cabinet

Use the DC voltage range of a multimeter to measure the voltages between the general positive and negative terminals of each battery string and the uncoated parts of the battery cabinet, ...

Battery Testing Procedure

Jan 10, 2025 · Discover the step-by-step battery testing procedure, including how to measure voltage, capacity, and internal resistance. Using this comprehensive guide, you can ensure ...

Contact Us

For technical specifications, project proposals, or partnership inquiries, please visit:

<https://www.lopianowa.pl>



Scan QR Code for More Information



<https://www.lopianowa.pl>