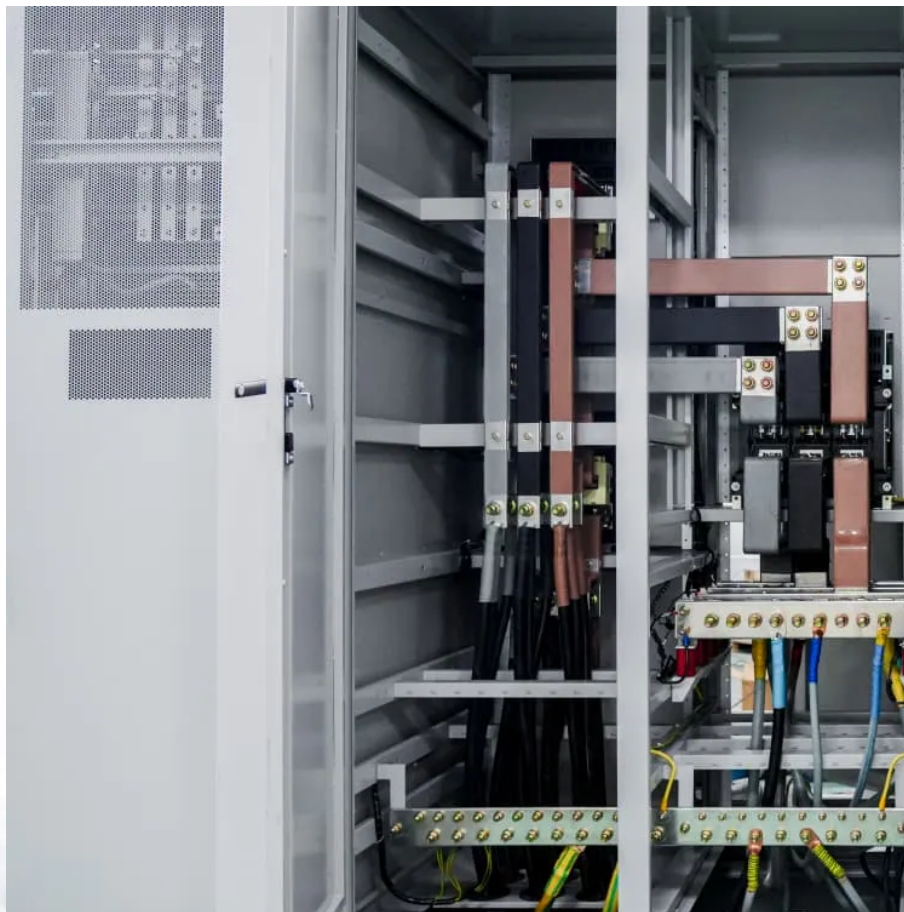


How long does it take for a mobile base station site to be delisted





Overview

What happens if a phone is handed over to a base station?

There is usually a smooth transition or 'handover' from cell to cell. During the duration of a call, the phone may have handed over to and from a number of base stations. If there is no adjoining base station, such as on the fringes of the mobile phone network, the call will drop out.

Do mobile phones need a base station?

Mobile phones and other mobile devices require a network of base stations in order to function. The base station antennas transmit and receive RF (radio frequency) signals, or radio waves, to and from mobile phones near the base station. Without these radio waves, mobile communications would not be possible.

What is a mobile phone base station?

A mobile phone base station provides coverage to a geographic area known as a "cell". Cells are aligned next to each other in a similar pattern to a honeycomb, and it is for this reason that mobile phone networks are sometimes referred to as "cellular" networks.

Who approves a mobile phone base station?

There are rules and standards telcos must follow to install mobile phone base stations. The decision on who approves a base station depends on several planning factors, including: the classification/zoning of the land.



How long does it take for a mobile base station site to be delisted

Engineering:Cell site

Jul 12, 2024 · A cell site, cell phone tower, cell base tower, or cellular base station is a cellular-enabled mobile device site where antennas and electronic communications equipment are ...

Base Stations

Jul 23, 2025 · The present-day tele-space is incomplete without the base stations as these constitute an important part of the modern-day scheme ...

Mobile Base Station Site Compliance , Corearth

Compliance relies on the successful design of a mobile base station installation. The location of neighbouring areas of interest must be ...

Base Stations

Jul 23, 2025 · The present-day tele-space is incomplete without the base stations as these constitute an important part of the modern-day scheme of wireless communications. They are ...

Instant Freight Transit Time Calculator , Air, ...

1 day ago · Get instant shipping time estimates for air, ocean, and trucking freight. Use Freightos' free international transit time calculator to plan your ...

gsm base station

Nov 30, 2023 · A GSM (Global System for Mobile Communications) base station, also known as a BTS (Base Transceiver Station), is a critical component in a GSM cellular network. It provides ...

Mobile Base Station Site Compliance , Corearth

Compliance relies on the successful design of a mobile base station installation. The location of neighbouring areas of interest must be reviewed to ensure EME compliance can be achieved ...

Rules on new mobile phone base stations

3 days ago · The decision on who approves a base station depends on several planning factors, including: the type of base station if it is a low-impact facility or not the classification/zoning of ...

Base stations and networks

6 days ago · Mobile phones and mobile devices require a network of radio base stations to function. Radio waves have been used for communication for more than 100 years.

Instant Freight Transit Time Calculator , Air, Ocean & Trucking

1 day ago · Get instant shipping time estimates for air, ocean, and trucking freight. Use



Freightos' free international transit time calculator to plan your shipments quickly.

Mobile Phone Base Stations EMF / Health Fact Pack

Mar 28, 2025 · Mobile phones When a mobile phone is switched on, it responds to specific control signals from nearby base stations. When it has found the nearest base station in the network ...

EMF

Some base stations have radio communications dishes (shaped like a drum) that connect the base station to the rest of the base station network. top What are 2G and 3G networks? 3G, or ...

Rules for telco deployments

Jun 19, 2023 · Get to know the rules on new mobile phone base stations There are Commonwealth laws that allow telecommunications companies (Telcos) to install smaller ...

Engineering:Cell site

OverviewOperationTemporary SitesEmploymentSpy Agency SetupOff-Grid
SystemsCamouflageMiniatureSee AlsoExternal LinksResearchers at Alcatel-Lucent have developed a cell site called lightRadio that fits in the palm of hand. It is the size of a Rubik's cube. It is capable of relaying 2G, 3G and 4Gsignals. They are more energy efficient and deliver broadband more efficiently than current cell sites. They could be used in very populated urban areas to make room for m See more on handwiki .b_imgcap_alttitle p strong,.b_imgcap_alttitle .b_factrow strong{color:#767676}#b_results .b_imgcap_alttitle{line-height:22px}.b_imgcap_alttitle{display:flex ;flex-direction:row-reverse;gap:var(--mai-smtc-padding-card-default)}.b_imgcap_alttitle .b_imgcap_img{flex-shrink:0;display:flex;flex-direction:column}.b_imgcap_alttitle .b_imgcap_main{min-width:0;flex:1}.b_imgcap_alttitle .b_imgcap_img>div,.b_imgcap_alttitle .b_imgcap_img a{display:flex}.b_imgcap_alttitle .b_imgcap_img img{border-radius:var(--smtc-corner-card-rest)}.b_hList img{display:block}.b_imagePair ner img{display:block;border-radius:6px}.b_algo .vttv2 img{border-radius:0}.b_hList .cico{margin-bottom:10px}.b_title .b_imagePair> ner,.b_vList>li>.b_imagePair> ner,.b_hList .b_imagePair> ner,.b_vPanel>div>.b_imagePair> ner,.b_gridList .b_imagePair> ner,.b_caption .b_imagePair> ner,.b_imagePair> ner>.b_footnote,.b_poleContent .b_imagePair> ner{padding-bottom:0}.b_imagePair> ner{padding-bottom:10px;float:left}.b_imagePair.reverse> ner{float:right}.b_imagePair .b_imagePair:last-child:after{clear:none}.b_algo .b_title .b_imagePair{ display:block}.b_imagePair.b_cTxtWithImg>{*{vertical-align:middle;display:inline-block}.b_imagePair.b_cTxtWithImg> ner{float:none;padding-right:10px}.b_imagePair.square_s> ner{width:50px}.b_imagePair.square_s{padding-left:60px}.b_imagePair.square_s> ner{margin:2px 0 0 -60px}.b_imagePair.square_s.reverse{padding-left:0;padding-right:60px}.b_imagePair.square_s.reverse> ner{margin:2px -60px 0 0}.b_ci_image_overlay:hover{cursor:pointer} sightsOverlay,#OverlayIFrame.b_mcOverlay sightsOv erlay{position:fixed;top:5%;left:5%;bottom:5%;right:5%;width:90%;height:90%;border:0;border-rad ius:15px;margin:0;padding:0;overflow:hidden;z-index:9;display:none}#OverlayMask,#OverlayMask. b_mcOverlay{z-index:8;background-color:#000;opacity:.6;position:fixed;top:0;left:0;width:100%;height:100%}emfexplained EMF - Mobile Networks Explained - L2Some base stations have radio communications dishes (shaped like a drum) that connect the base station to the rest of the base station network. top ...



Contact Us

For technical specifications, project proposals, or partnership inquiries, please visit:

<https://www.lopianowa.pl>

Scan QR Code for More Information



<https://www.lopianowa.pl>