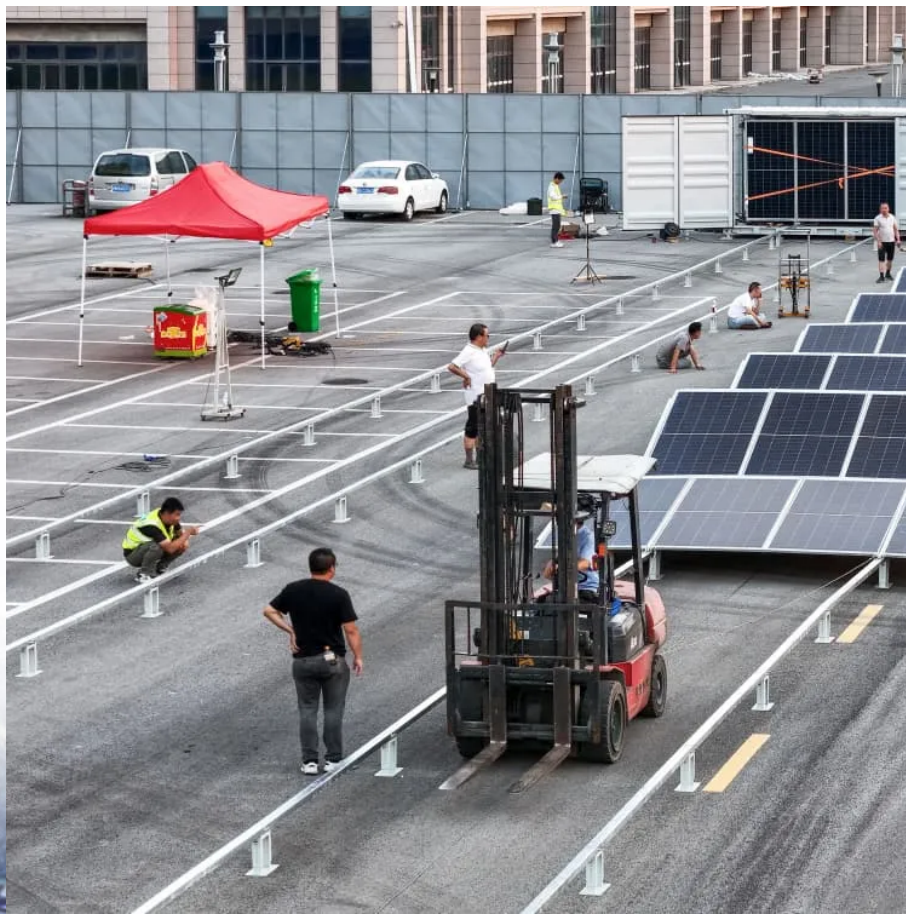


Environmental Assessment of South Tarawa Telecommunications Base Station Inverter Grid Connection





Overview

Does South Tarawa need solar power?

Constrained renewable energy development and lack of private sector participation. While grid-connected solar power is the least-cost renewable energy option for South Tarawa and there is significant resource potential of 554 MW, deployment has been limited.

Who generates grid-connected electricity in South Tarawa?

Grid-connected electricity in South Tarawa is generated and distributed by the state-owned Public Utilities Board (PUB).

How much power does South Tarawa need?

The photovoltaic systems account for 22% of installed capacity but supply only around 9% of demand on South Tarawa; diesel generation supplies the remaining 91%. The PUB serves more than 57,000 people in South Tarawa, which has the highest demand at 24.7 gigawatt-hours (GWh) in 2019.



Environmental Assessment of South Tarawa Telecommunications Ba

DRAFT FINAL

Dec 1, 2020 · The current power system in South Tarawa has installed or planned grid-connected PV capacity to meet part of the peak demand and offset expensive diesel electricity; but grid ...

South Tarawa Renewable Energy Project (Phase 2): ...

Dec 26, 2024 · A. Sensitivity of Project Component(s) to Climate or Weather Conditions and the Sea Level Notably through the floating PV panels (FPV) and related inputs, the project ...

Kiribati Grid Connected Solar PV Power Station Project

Environmental impact assessment done to evaluate the feasibility in installing a maximum of 900kWp PV solar power directly connected to the electricity grid of South Tarawa. Report ...

World Bank Document

Jul 13, 2016 · Due to this overcrowding effect, South Tarawa faces serious environmental and social problems, as pollution of ground water, polluted lagoon and beaches, scarcity of ...

The Importance of Renewable Energy for Telecommunications Base Stations

Aug 23, 2024 · Installations of telecommunications base stations necessary to address the surging demand for new services are traditionally powered by conventional energy sources, ...

South Tarawa Renewable Energy Project: Updated Initial Environmental

Apr 23, 2022 · Initial Environmental Examinations (IEE) describe the environmental condition of a project, including potential impact, formulation of mitigation measures, and preparation of ...

ENVIRONMENTAL IMPACT ASSESSMENT FRAMEWORK FOR ...

South Tarawa Wind and Solar Energy Storage Project The project will (i) introduce the first-of-its-kind near-shore marine floating solar photovoltaic power plant; (ii) install a battery energy ...

South Tarawa Renewable Energy Project: Sector ...

Feb 4, 2023 · 6. Constrained renewable energy development and lack of private sector participation. While grid-connected solar power is the least-cost renewable energy option for ...

Initial Environmental Examination

Oct 11, 2023 · Inverter - An inverter is a device that changes direct current (DC) to alternating current (AC). Electricity generated by a solar cell is Direct Current (DC), the Kiribati electricity ...

South Tarawa Renewable Energy Project (Phase 2) (ADB ...

Dec 10, 2024 · The project will indicatively install 4 megawatts (MW) FPV, 3 megavolt-ampere (MVA) /5 megawatt-hour (MWh) BESS, and 33 kilovolt (kV) underground transmission network ...



The Importance of Renewable Energy for ...

Aug 23, 2024 · Installations of telecommunications base stations necessary to address the surging demand for new services are traditionally powered ...

Contact Us

For technical specifications, project proposals, or partnership inquiries, please visit:

<https://www.lopianowa.pl>

Scan QR Code for More Information



<https://www.lopianowa.pl>