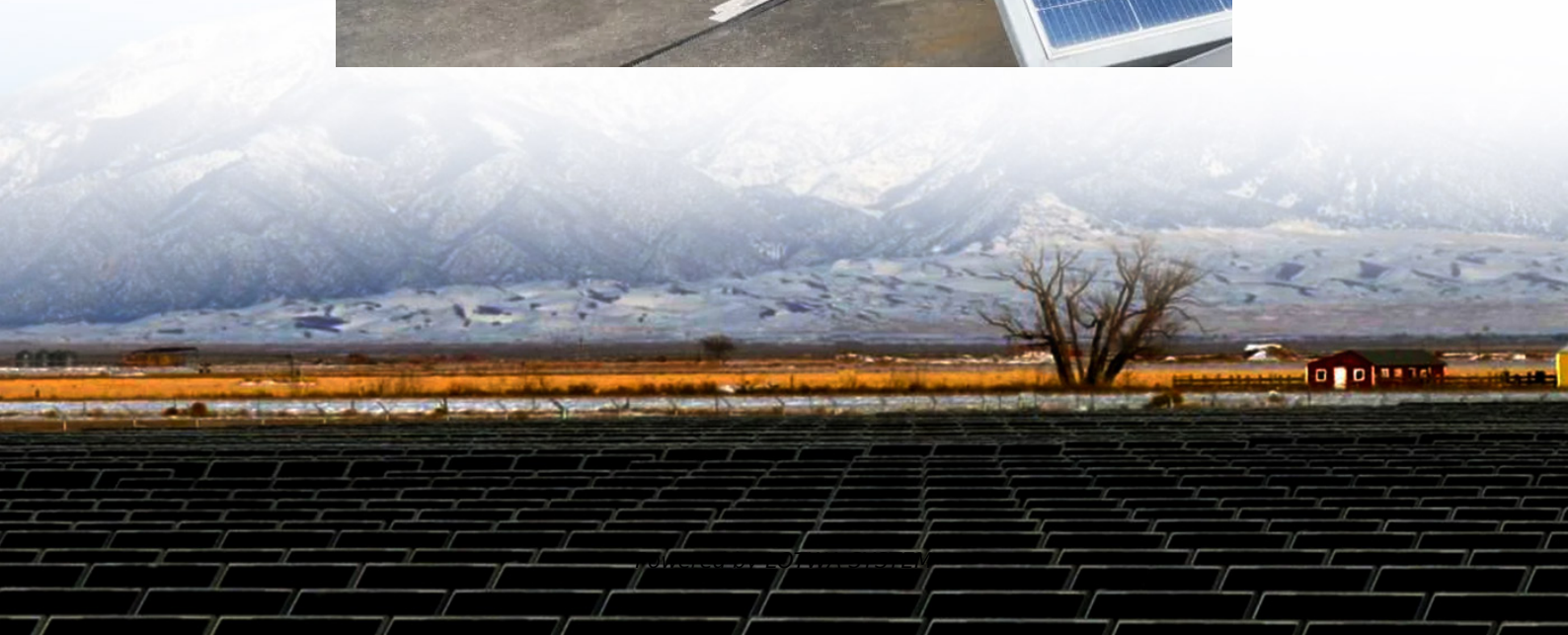


Can I use a 24V household power inverter





Overview

Should I choose a 12V or 24V inverter?

Whether you choose a 12V or 24V inverter, ensure that the system you select matches your power needs, space limitations, and long-term goals for energy independence. A 12V inverter is typically more suitable for smaller setups, while a 24V inverter offers enhanced efficiency and is ideal for larger applications.

Does a 12V inverter need a battery bank?

The battery bank you use will play a crucial role in how long your system can run before needing a recharge. 12V vs 24V inverters have different effects on battery life and capacity. 12V inverters typically require a larger battery bank to provide enough power for extended periods.

Can 24V solar panels be connected to a 12V inverter?

Connecting 24V solar panels to a 12V inverter is not ideal and generally not recommended. The inverter cannot work properly when the voltage does not match, and solar panels cannot be directly connected to the inverter.

Why are 24V inverters more efficient?

This is because they need to convert a lower voltage DC source to AC power, which can result in more energy losses during the conversion process. 24V Inverter Efficiency: 24V inverters, on the other hand, are inherently more efficient as they work with a higher input voltage.



Can I use a 24V household power inverter

The Differences Between 24v and 48v ...

Apr 13, 2025 · The correct inverter voltage is essential for system efficiency, safety, and future scalability. In standard off-grid solar systems, RVs, or ...

24v Dc To Ac Inverter , RAGGIE

Jun 25, 2024 · With a compact and portable design, it's perfect for use in RVs, boats, trucks, and off-grid solar systems, Equipped with multiple safety features, including overload and overheat ...

12V vs 24V inverter

Oct 22, 2023 · This article introduces how inverter works and compares 12V vs 24V inverter, including the applications, costs, and other differences, ...

24v Inverter, 24v DC to 120v/240v AC Power Inverter , inverter...

24V 600w inverter with peak power 1200w, which is a modified sine wave, converts your car battery power to AC power 110/120 Volt or 220/230/240 Volt for options, with a safe charging ...

12V vs 24V Inverters Key Differences and Which One is Right ...

Jan 21, 2025 · Battery Life and Capacity: 12V vs 24V Inverters The battery bank you use will play a crucial role in how long your system can run before needing a recharge. 12V vs 24V ...

Can I Use 24V Inverter with 12V Battery

May 1, 2025 · A 24V inverter inherently anticipates a 24V input. Using a 12V input could result in underpowered performance, as the inverter won't operate at its rated capacity. The mismatch ...

12V Inverter vs 24V Inverter -- What Is The Difference

Dec 11, 2024 · This article will explore the differences between 12v inverter vs 24v inverter, considering factors such as energy loss, battery requirements, and suitability for different ...

Inverter Size Calculator & Formula Online Calculator Ultra

Oct 3, 2024 · Historical Background Inverters have become a crucial part of power systems, especially with the rise of solar energy and off-grid power solutions. An inverter converts direct ...

Can I Use an Inverter to Power My House?

2 days ago · An inverter converts the direct current (DC) from sources such as solar panels or batteries into the alternating current (AC) needed to power household appliances. Depending ...

12V vs 24V Inverter: What's The Difference

Torn between 12V and 24V inverters? Discover the key differences in efficiency, cost, and power capacity to determine which is better for your ...



What does a power inverter do, and what can I use one for?

The inverter draws its power from a 12 Volt battery (preferably deep-cycle), or several batteries wired in parallel. The battery will need to be recharged as the power is drawn out of it by the ...

What appliances can I use on a 1000W power ...

Jun 24, 2024 · A 1000W power inverter converts direct current (usually 12V or 24V) from a battery into alternating current, which is the power ...

Power Inverter, DC to AC Inverter , inverter

The primary purpose of a 24V inverter is to provide electrical power for devices that operate on AC power when only a DC power source is ...

? Appliances You Can and Cannot Use with an Inverter - A ...

May 30, 2025 · Inverters have become a household essential for managing power outages and running appliances during blackouts. But not all appliances are suitable for inverter ...

Tips to Choose the Right Inverter for Homes: ...

Sep 27, 2023 · Choose the Right Inverter with the difference between 12V or 24V and their advantages: inverter efficiency, battery bank setup, cabling ...

12V vs 24V Inverter: What's The Difference & Which is Better

Torn between 12V and 24V inverters? Discover the key differences in efficiency, cost, and power capacity to determine which is better for your energy needs.

12V vs 24V Inverters Key Differences and ...

Jan 21, 2025 · Battery Life and Capacity: 12V vs 24V Inverters The battery bank you use will play a crucial role in how long your system can run ...

Tips to Choose the Right Inverter for Homes: 12V or 24V

Sep 27, 2023 · Choose the Right Inverter with the difference between 12V or 24V and their advantages: inverter efficiency, battery bank setup, cabling cost, and overall solar power ...

What Can You Run Off a 3000W Inverter

Mar 30, 2024 · A 3000W inverter can be a valuable addition to your power supply arsenal, providing convenience and peace of mind in various ...

What Can a 2000W Inverter Run? Fridges, ...

Mar 6, 2025 · Curious about what can a 2000-watt inverter run? This guide explores the appliances it can power, runtime, battery needs, and the ...

Can I Run a 12V Inverter on a 24V Battery?

Apr 10, 2025 · Inverter: Choose a 12V inverter with power between 1000W and 3000W, which can meet the needs of most small household ...



12V vs. 24V vs. 48V Power Inverters: How to Choose the ...

Sep 8, 2025 · When shopping for a power inverter, most beginners fixate on wattage or price--but the input voltage (12V, 24V, or 48V) is just as critical. Pick the wrong voltage, and your inverter ...

1000-Watt Inverters: List of Devices You Can ...

Jan 2, 2025 · This guide is for you if you have purchased the 1000-watt inverter recently but don't know about the list of devices you can run. We ...

12V vs 24V inverter

Oct 22, 2023 · This article introduces how inverter works and compares 12V vs 24V inverter, including the applications, costs, and other differences, also provides a guide on choosing the ...

Contact Us

For technical specifications, project proposals, or partnership inquiries, please visit:

<https://www.lopianowa.pl>

Scan QR Code for More Information



<https://www.lopianowa.pl>